



PCET's
**Pimpri
Chinchwad
University, Pune**

Learn | Grow | Achieve



PIMPRI CHINCHWAD EDUCATION TRUST
A Trusted Brand in Education Since 1990..

SCHOOL OF MANAGEMENT

- BBA (Bachelor of Business Administration)
- MBA (General)
- MBA (International)
- MBA (Business Analytics & AI)
- MBA (Agri Business Management)
- MBA (Pharmaceutical Management)

ADMISSIONS OPEN

www.PCU.edu.in

About Pimpri Chinchwad Education Trust (PCET), Pune



PCET Campus, Akurdi, Pune

Pimpri Chinchwad Education Trust (PCET) has a legacy of nurturing excellence since its establishment in 1990. Its sole mission was aimed at serving society, the industry, and all stakeholders through value-inculcating, quality education in the area of schooling, as well as professional tutelage in the fields of engineering, IT, management, design, health sciences, liberal arts, and computer applications. Our 12 institutes spread across our 3 campuses in Nigdi, Ravet, and Sate, Vadgaon Maval, Pune, respectively have carved out a name for themselves, having transformed the lives of over 47000 students so far. Our institutes: Pimpri Chinchwad College of Engineering (PCCOE), Pimpri Chinchwad College of Engineering & Research (PCCOER), and S.B. Patil College of Architecture & Design are some of the most sought-after colleges in the country.

About Pimpri Chinchwad University, Pune

Pimpri Chinchwad Education Trust (PCET) is the driving force behind Pimpri Chinchwad University, Pune. As a trusted and renowned educational institution, PCET has a rich history of providing quality education across various disciplines. With a strong commitment to academic excellence, research, and industry-relevant programs, PCET has become a beacon of learning in the Pune region. Pimpri Chinchwad University, Pune, is a dynamic and forward-thinking university committed to delivering high-quality education and fostering innovation. Located in the thriving city of Pimpri Chinchwad Pune belt, it is strategically positioned within an industrial belt that includes IT hubs, automobile industries, and diverse manufacturing sectors. The university offers a diverse range of programs, from engineering and technology to management, design, liberal arts, mass media, law, pharmacy, health sciences, and more, ensuring students have a plethora of options to explore.



PCU Campus, Sate, Vadgaon - Maval, Pune

Institutes Under

Pimpri Chinchwad Education Trust (PCET Pune)

- Pimpri Chinchwad Polytechnic (www.PCPolytechnic.com)
- Pimpri Chinchwad College of Engineering (www.PCCOEPune.com)
- Pune Business School (www.PuneBusinessSchool.com)
- S. B. Patil Public School (www.SBPatilSchool.com)
- S. B. Patil College of Science & Commerce (www.SBPatilCollege.com)
- Pimpri Chinchwad College of Arts, Commerce and Science (www.PCACSpune.com)
- S. B. Patil Institute of Management (www.SBPatilMBA.com)
- Pimpri Chinchwad College of Engineering & Research (www.PCCOER.com)
- S. B. Patil College of Architecture & Design (www.SBPatilArchitecture.com)

Institutes Under Management Support By Pimpri Chinchwad Trust (PCET)

- Nutan Maharashtra Institute of Engineering & Technology (www.NMIET.edu.in)

Programs offered at Pimpri Chinchwad University

- | | | | | | |
|----------|---------|---------------------|---------------------|---------|----------|
| ♦ B.Tech | ♦ MCA | ♦ MBA International | ♦ MBA Agri Business | ♦ LL.B. | ♦ B.Sc. |
| ♦ M.Tech | ♦ M.Des | ♦ MBA General | ♦ MBA Pharma | ♦ LL.M. | ♦ BA |
| ♦ BCA | ♦ B.Des | ♦ BA.LL.B. | ♦ MBA BA & AI | ♦ BBA | ♦ Pharma |

BBA

Bachelor of Business Administration



Duration

3/4 Years

Fee Per Annum



₹ 1,25,000/-

Courses Offered

Eligibility : Open Category student should have scored minimum 50% of Score at 10+2 level from ICSE/ CBSE/Any State Board Examination or equivalent examination from any recognized board in Art, Science, Commerce or any other stream and 45% for reserved category candidate.

Candidates are selected on the basis of Merit And Personal interview conducted by PCU.

Specialization



Marketing

- + Digital Consumer Behaviour
- + E-Commerce Analytics



Human Resource Mgmt.

- + Employee Motivation
- + Talent Acquisition



Finance

- + Corporate Finance
- + Behavioural Finance



Digital Marketing

- + Digital Marketing Analytics
- + Social Media Marketing



FinTech

- + Transforming Digital Payments
- + Innovating Investment Opportunities



Business Analytics

- + Data Analysis
- + Reporting & Insights

About School of Management

Pimpri Chinchwad University's School of Management is a premier institution offering cutting-edge undergraduate and postgraduate programs in management. Focused on academic excellence, skill development, and experiential learning, The school prepares students to navigate the complexities of the global business landscape. With a vibrant learning environment, experienced faculty, and industry-aligned curriculum, we cultivate ethical leaders equipped with the knowledge and competencies to succeed in the corporate world.

PCET's International Collaborations

Bilateral Agreements (34+ MoUs) with International Universities.

(USA, UK, Australia, Russia, Germany, Japan, Malaysia, Indonesia, Vietnam, Myanmar and Ireland)

PCET's international collaborations stand as a testament to its commitment to global education and academic excellence. With partnerships involving over 34 prestigious international universities and organizations, PCET fosters academic and research exchange, facilitates expertise sharing for course design, and jointly conducts workshops, conferences, webinars, and symposiums. These collaborations also offer valuable opportunities for students across all PCET institutes, including Pimpri Chinchwad University (PCU).



WHY CHOOSE US ?

- Global Competence** : Foreign language proficiency in German & Japanese for international career opportunities.
- Industry Partnership** : MoUs with NSE Academy & Cytolife Agritech for hands-on training and internships.
- Diverse Specializations** : Finance, HR, Marketing, Digital Marketing, Investing Banking, Fintech, Entrepreneurship Development, Business Analytics & AI, Agribusiness, & Pharmaceutical Management.
- International Certifications** : Prestigious Global EdX, coursera, Google certifications to enhance career prospects.
- Dynamic Learning** : Industrial Visit, Workshops, guest lectures, seminars, Workshops & global study tours for a 360-degree learning experience. Association with NIPM Student Chapter for training Counselling & Placement
- Networking Opportunities** : Conferences with industry leaders & academic veterans for insights and collaboration.

MBA

Master of Business Administration

♦ International ♦ Business Analytics & AI



Duration

2 Years



Fee Per Annum

₹ 3,70,000/-

Courses Offered

MBA

Master of Business Administration

♦ General ♦ Agribusiness Management ♦ Pharmaceutical Management



Duration

2 Years



Fee Per Annum

₹ 2,60,000/-

Eligibility : Open Category student should have scored minimum 50% aggregate in Graduation in any stream from UGC approved Institution or equivalent (at least 45% marks, in case of reserved category candidate belonging to Maharashtra State only) And Positive score in the following National Level Test conducted by an apex testing body: CAT, XAT, PERA, MH-CET, CUET & CMAT or PCU Test will be accepted.

Candidates are selected on basis of Group Discussion AND Personal Interview conducted by the PCU.

Specialization



Marketing

- + Strategic Marketing Management
- + Consumer Insights & Behavior
- + Digital Marketing Innovations
- + Brand Strategy & Digital Engagement



Human Resource Mgmt.

- + Strategic Human Resources Mgmt.
- + People analytics and reporting
- + Managing People with Power Skills
- + Humanitarian Response to Conflict and Disaster
- + Managing the Human Side of Digital Disruption
- + Human-Computer Interaction



Finance

- + Mastering Financial Markets
- + Corporate Finance for Decision Making
- + Data-Driven Financial Strategies
- + Risk Mgmt. & Sustainable Investing



Digital Marketing

- + Digital Mktg Analytics
- + Digital Consumer behaviour
- + Social Media Mktg
- + Content Mktg
- + SEO
- + Web Analytics



FinTech

- + Machine learning with Python for finance professionals
- + Machine Learning Use Cases in Finance
- + Fintech : AI & Machine Learning in the Financial Industry
- + Fintech : IoT and APIs in the Financial Industry
- + Blockchain and FinTech: Basics, Applications, and Limitations
- + Cryptocurrency as an Asset Class



Investment Banking

- + Financial Analysis for Decision Making
- + Unlocking Investment and Finance
- + Risk & Return
- + Revenue Forecasting and Analysis
- + Sustainable Corporate Financing : Application
- + M&A : Concepts and Theories



Logistics & Supply Chain

- + Optimizing Global Supply Chains
- + Digital Supply Chain Solutions
- + Sustainable Logistics Practices
- + Data-Driven Logistics Innovation



Entrepreneurship & Venture Dev.

- + The Entrepreneurial Mindset
- + Digital Technology and Innovation
- + Sustainable Energy
- + Entrepreneurship : Venture Creation Programme
- + Entrepreneurial Operations : Launching a Startup
- + Enabling Entrepreneurs to Shape a Better World

PCET Centralised Placement Cell

The PCET Centralized Placement Cell is a pioneering initiative that serves as the cornerstone of placement activities across all institutes under the Pimpri Chinchwad Education Trust (PCET). With a strong legacy of academic excellence and industry collaboration, this centralized cell ensures that all students within the PCET ecosystem have access to high-quality placement opportunities.

Highest Salary Offered to our Student

CTC 61 Lakhs p.a

**PCET TOTAL OFFERS 2022 BATCH:
2,147 JOB OFFERS FOR 1,662 STUDENTS**

Stellar Placements for PCET Students

Capgemini (2022-2023) 547

Capgemini (2021-2022) 348

Capgemini (2020-2021) 323

Cognizant (2021-2022) 307

Wipro (2021-2022) 267

Cognizant (2022-2023) 229

Capgemini (2019-2020) 207

KPIT (2015-2016) 183

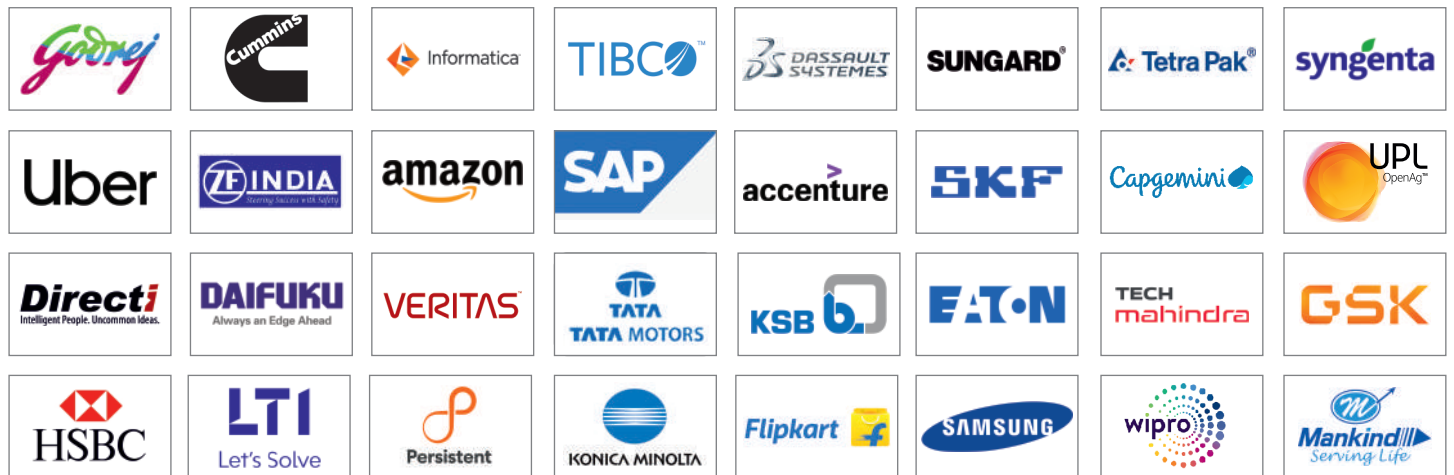
KPIT (2014-2015) 155

Accenture (2022-2023) 149

Company	Salary (LACS PER YEAR)	Company	Salary (LACS PER YEAR)
UBER	61 L	AFour Technologies	8.0 L
Data Insights	36 L	Samsung R&D	7.5 L
ZF India	32 L	Capgemini	7.5 L
Amazon	28L	Dassault	7.5 L
Directi	26 L	Josh Software	7.0 L
Konica (Japan)	20 L	Bombardier	7.0 L
Daifuku Co Ltd (Japan)	18 L	TIAA	7.0 L
Techfirm (Japan)	17 L	Accenture	6.5 L
Veritas	12.5 L	Informatica	6.0 L
HSBC	12 L	Mediaocean	6.0 L
TEO Technologic	11.6 L	TetraPak	6.0 L
Adobe	11 L	ThoughtWorks	5.8 L
Flipkart	11 L	Tibco	5.5 L
Credit Suisse	11L	Cummins	5.5 L
Vmware	10 L	Godrej & Boyce	5.5 L
LTI	10 L	Value Labs	5.3 L
Quantiphi	9.5 L	KSB Pumps	4.75 L
Symantec	9.0 L	Sagitec	4.5 L
Persistent Systems	8.4 L	Uno Minda	4.5 L
SAP Lab	8.25 L	SKF	4.5 L
Pubmatic	8.0 L	Sungard	4.5 L

Industry Connects

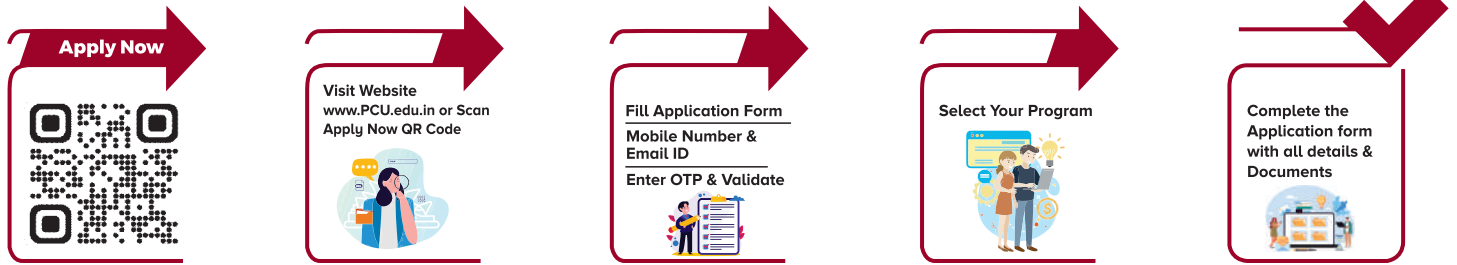
Our strategic location amidst the industrial hubs of Pune, Pimpri Chinchwad, Talegaon, Chakan, Navi Mumbai, and Mumbai provides students with unparalleled opportunities for internships, industrial visits, and collaborations with leading companies. Our strong network of PCET alumni, many of whom are leaders in their respective industries, frequently engage with the students, sharing valuable insights and paving the way for their success.



Highlights at Pimpri Chinchwad Education Trust, Pune

34+ Years Legacy In Quality Education	1,000+ Recruiters On Campus Every Year	32,100+ Placements	57,500+ Alumni	5,500 Research Papers
1,200+ Faculty	20,000+ Students on Campus Every Year	4 Campuses	11 Educational Institutes	550+ Patents

Apply in easy step's



A Flourishing Student Life at PCU

Life at PCU is not just about academics it's also about personal growth, cultural exposure, and extracurricular activities. Our campus is buzzing with societies and events that cater to diverse interests, ensuring that students have a well-rounded experience.



Shape your future at PCU with International-National certifications & Experiential Learning in Academics In collaboration with



Spoken Tutorial
Software Training Project
Developed by IIT Bombay



EduSkills®
Nation Building Through Skills



NSE
Academy



Red Hat Academy
World's largest Linux Company

coursera

NPTEL

Google
CERTIFICATIONS

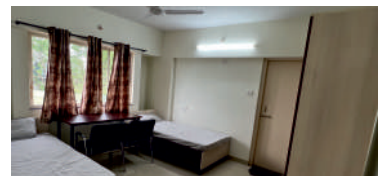
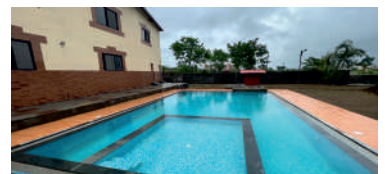
INTERNSHALA

PCU HOSTEL

We are delighted to introduce our exceptional Pimpri Chinchwad University, Pune hostel facility, nestled amidst the breathtaking beauty of lush green nature and majestic mountains. Designed to provide students with a truly enriching living experience, our hostel offers a range of outstanding features.

Key Features We Offer

- Modern and Well-Equipped Rooms
- Wi-Fi Connectivity
- Secure and Safe Environment
- Indoor Games
- Gymnasium
- Lush Green Nature
- Study Areas with Scenic Views
- Supportive Staff and Services



Leading the Way in Education : Maharashtra's Finest University

AWARDS & RANKINGS



Best Emerging
University
of the year 2023



Best Organization in
Academics,
Placements & Research



Awarded as the
'Pride of
Maharashtra'



Awarded as the
"Best Private University
in Maharashtra".



Ranked 5 among the
best emerging
state-private universities.



EduSkills Emerging University
& Academic Credit for
Internship Award 2024



Times Education
Icons 2024



Bharat Leadership
Award



PCET's
Pimpri
Chinchwad
University, Pune

Learn | Grow | Achieve

PCET's Pimpri Chinchwad University (PCU)

(Established under Govt. of Maharashtra Act No. V 2023)

Sate Maval (PMRDA), Pune- 412 106. MH - India

Delhi Office : Nidhi House - B2/1B (Ground Floor) Safderjung Enclave.

☎ : +91 9046 9090 03 ☎ : +91 83 8181 4141 ☎ : +91 89565 04257

✉ : admissions@pcu.edu.in 🌐 : www.PCU.edu.in

Scan To Know More

